

6 A case study

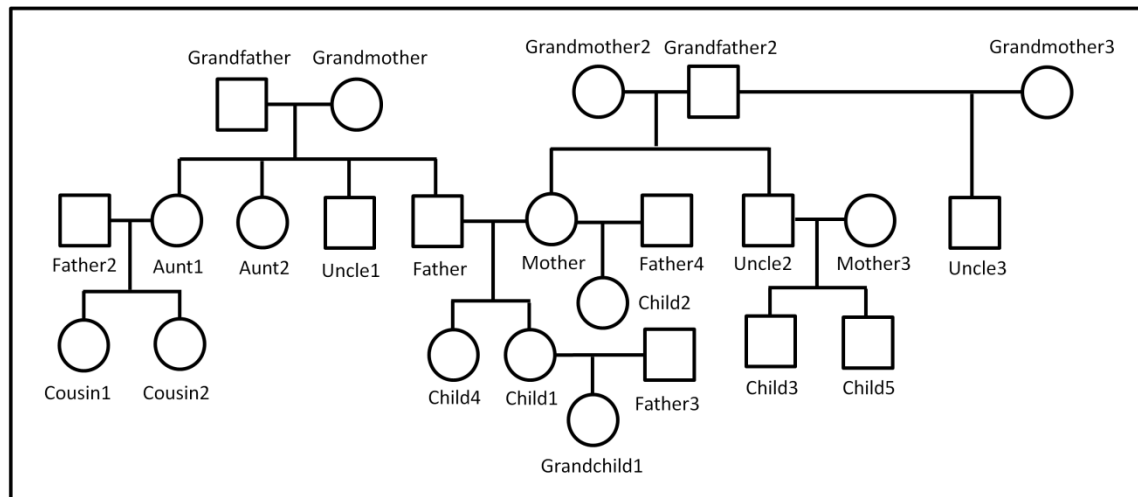


Figure 6.1. Overview of the pedigree used to generate data for all exercises and where the relation to the missing person for each family can be derived based on the illustration and the data files.

6.1.1 Mass grave

All files associated with the exercise can be obtained as a single compressed file, [https://familias.name/BookKETP/Exercises/Ch6/Exercise_6_2_3_\(Mass_grave\).zip](https://familias.name/BookKETP/Exercises/Ch6/Exercise_6_2_3_(Mass_grave).zip), or by following links from the online repository. A ready-to-use Familias project file with all population frequency data as well as PM and AM data imported is also given.

Solutions are given at https://familias.name/BookKETP/Exercises/Ch6/Exercise_6_2_3_solutions.pdf

6.1.2 Burial site

All files associated with the exercise can be obtain as a single compressed file through [https://familias.name/BookKETP/Exercises/Ch6/Exercise_6_2_4_\(Burial_site\).zip](https://familias.name/BookKETP/Exercises/Ch6/Exercise_6_2_4_(Burial_site).zip) or following links from the online repository. A ready-to-use Familias project file with all population frequency data as well as PM and AM data imported is also given.

Solutions are given at https://familias.name/BookKETP/Exercises/Ch6/Exercise_6_2_4_solutions.pdf

6.1.3 *Plane crash*

All files associated with the exercise can be obtain as a single compressed file through [https://familias.name/BookKETP/Exercises/Ch6/Exercise_6_2_5_\(Plane_crash\).zip](https://familias.name/BookKETP/Exercises/Ch6/Exercise_6_2_5_(Plane_crash).zip) or following links from the main repository. A ready-to-use Familias project file with all population frequency data as well as PM and AM data imported is also given.

Solutions are given at https://familias.name/BookKETP/Exercises/Ch6/Exercise_6_2_5_solutions.pdf

6.1.4 *Family grave Part I*

All files associated with the exercise can be obtain as a single compressed file through [https://familias.name/BookKETP/Exercises/Ch6/Exercise_6_2_6_\(Family_grave\).zip](https://familias.name/BookKETP/Exercises/Ch6/Exercise_6_2_6_(Family_grave).zip) or following links from the main repository. A ready-to-use Familias project file with all population frequency data as well as PM and AM data imported is also given.

Solutions are given at

https://familias.name/BookKETP/Exercises/Ch6/Exercise_6_2_6_parti_solutions.pdf

6.1.5 *Family grave Part II*

Solutions are given at

https://familias.name/BookKETP/Exercises/Ch6/Exercise_6_2_6_partii_solutions.pdf